



Charles A. Lindbergh State Park
Minnesota
Department of Natural Resources

DNR Web Site: www.dnr.state.mn.us

Charles A. Lindbergh State Park
P.O. Box 364
Little Falls, MN 56345
320-616-2525

The park was established in 1931 in memory of Charles A. Lindbergh Sr. The park boundary presently consists of 436 acres. Located on the Mississippi River, the park offers visitors a quaint picnic area, which includes a WPA shelter and stone water tower. Fish or canoe the waters of the Mississippi River, walk or ski the trails amid grand pine, aspen, oak trees and spacious grasslands. Spring wildflowers are an awesome sight with ospreys, blue birds, cardinals, bald eagles (common sight fall through spring), various hawks, and waterfowl delight birders. State park vehicle permits required and are available at the park office. Park is open year round daily 8 a.m. to 10 p.m.

Facilities

- | | |
|------------------------------------|-------------------------------------|
| 38 campsites | 15 electric campsites |
| 2 backpack or canoe-in campsites | Group camp for 30 |
| RV dump station | Showers |
| Picnic area with enclosed shelter | 6 miles of hiking and skiing trails |
| Boat ramp on the Mississippi River | Canoe rental |

Schoessling Unit

Charles A. Lindbergh State Park Schoessling Unit is located on road #213 just north of the Little Elk River. It has canoe access on the Mississippi River, picnic tables, a beautiful stand of large white pines, and hiking trails.

Charles A. Lindbergh Historic Site

Minnesota Historical Society
1620 Lindbergh Drive South
Little Falls, MN 56345
320-632-3154
www.mnhs.org/lindbergh
Email: Lindbergh@mnhs.org
Minnesota nature and travel guides are available in gift shop

Call for the admission rates

Hours:

May through Labor Day: Monday through Saturday, 10:00 a.m. to 5:00 p.m., Sunday noon to 5:00 p.m.

Labor Day through October 31: Saturday, 10:00 a.m. to 4:00 p.m., Sunday noon to 4:00 p.m.

Open any time of year by appointment.

Charles A. Lindbergh, the famous aviator and environmentalist, spent boyhood summers and a few winters at this home on the Mississippi River.

Learn about Lindbergh's interest in conservation in the site's newly remodeled visitor center that re-opened in August 2002.



After touring his boyhood home, visitors can take a stroll down the site's nature trail along the Mississippi River. Basswood, butternut, birch, maple, hop hornbeam (ironwood) and white pine trees grow along the trail.

From late April through June, you will discover patches of wild ginger, hepatica, violets, Canada anemone, meadow rue, horsetail, wild flag, harebell, jack-in-the-pulpit, and bellwort to name a few.

Bird watchers may spot orioles, scarlet tanagers, flickers, pine siskins, goldfinches, rose-breasted grosbeaks, chickadees, hawks, swallows, nuthatches, black and white warblers, bald eagles, pileated woodpeckers, and many more. Bring your binoculars!

Maple Island Park



Located at Kidder Street SE and 3rd Avenue South, Little Falls, MN 320-616-5500
The birthplace of Little Falls. Here, the natural waterfalls were developed for power as early as 1849. Little Falls' first industry was

located at this site. Located along the Mississippi River, this scenic park is beautifully landscaped with flowers, trees and shrubs. Footpaths offer an enjoyable stroll through the park. A gazebo and park benches overlook the river. Picnic tables and a shelter with rest rooms provide additional comforts for park visitors.

Minnesota Fishing Museum

304 W. Broadway
Little Falls, MN 56345 The Depot 320-616-2011



Antique rods, lures, boats, motors and other memorabilia preserve the heritage of past anglers in Minnesota. Free admission on Tuesdays. Call for hours of operation

State Wildlife Management Area (WMA)

www.dnr.state.mn.us
Area DNR Wildlife Supervisor
16543 Haven Road
Little Falls, MN 56345
320-616-2468



The Wildlife Division of the Minnesota Department of Natural Resources carries out management and research programs affecting all state wildlife species, with a slight emphasis on game species. The division acquires, develops, and manages wildlife management areas, most of which are open to public hunting during established seasons, as well as other wildlife-compatible recreation.



Pine Grove Park and Zoo

1200 Broadway Ave W
Little Falls, MN 56345
320-616-5595
Call for Hours

Pine Grove Zoo, located in Little Falls, MN, is nestled among one of the last standing groves of white pines. The zoo is home to a variety of exotic, native and domestic animals which include: cougars, tiger, pronghorn, various hoof stock and a petting



stable. Along with this beautiful, serene zoo, there are walking trails, recreational courts, a large picnic/playground area and a rustic log shelter. Admission is free, although donations are encouraged, and the hours vary

by season. Come and see why we are

"The Wildest Place in Central Minnesota"



Belle Prairie Park
Time has literally stood still at Belle Prairie Park.

It is assumed that Belle Prairie was a favorite stop for travelers on the Red River Ox Cart Trail in the 1840's. Visitors can still explore the area that oxen and cart traveled so many years ago. Native prairie grasses and plants can be found surrounded by acres of virgin white pines that overlook the Mississippi River. The park also features picnic and play sites, boat ramp, ball field, walking trails, and shelter. View the Hamilton-Ferrand cemetery dated to 1855. Located 5 miles north of Little Falls on Hwy 371. Hours are 8 a.m. to 10 p.m. (closed during winter months). For more information, call Morrison County Public Works. 320-632-0121.

**General
E.A. Walsh
Training
Center
Camp Ripley**



15000 Highway 115
Little Falls, MN 56345
320-632-7400
9:30 a.m. – 3:30 p.m.

Offers a wide variety of group tours to suit any age. Briefings are available for those interested in taking an in depth look at how today's National Guard soldiers train. The award winning Environmental program at Camp Ripley offers tours and briefings for military personnel and civilians. Camping and fishing are available to military personnel and retirees only.



**Camp Ripley
Environmental
Center**

Camp Ripley has become an environmental

learning center for schools and the community. What could be a better place to learn about the environment than a 53,000 acre classroom? Since 1990, students from the community have trekked to Camp Ripley to learn about protecting and managing the environment. One such program established by the local high school is "Community Environmental Involvement". Paired with local professionals, students function as apprentices exposing students to activities that cannot be simulated in traditional classroom settings and gives them real life, on-the-job experience.



**Lake
Alexander
Preserve**

Take U.S. Hwy 10 N to Cushing. At Cushing, drive north on County Road 5 for five miles to the preserve site. Park along the side of any of the gated road approaches.

The Lake Alexander Preserve is centered in an 180,000-acre landscape that is extremely diverse from a biological perspective. A mixed hardwood forest interspersed with wetlands, meadows, native prairie, and stands of red and white pine characterizes the vegetative cover of the Preserve. The unfragmented nature of the Preserve's forest cover provides important habitat to songbirds and other wildlife that are dependent on the forest's interior. Bird watching enthusiasts can expect to see a variety of bird species that inhabit the Preserve including great blue herons, common loons, ruffed grouse, bald eagles, and osprey. The Upper Midwest's healthiest population of the declining red-shouldered hawk can also be found here, along with timber wolves, black bears, white-tailed deer and Blanding's turtles.

**Northland Arboretum
Paul Bunyan Conservation Area**

NW 7th Street
Brainerd, MN 56401
218-829-8770
Fees



This 500-acre preserve provides opportunities to observe wildlife, to hike and ski over 20 kilometers of trails, view native ecosystems and vast collection of trees, shrubs and flowers. Areas of interest at the Arboretum include the Monet Pond & Bridge, the DNR Landscaping for Wildlife project, which boasts an extravagant gazebo, the Girl Scout Secret Garden and many flowerbeds maintained by volunteers. The site boasts a beautiful Red Pine Plantation, a 40 acre grassland, and an excellent Jack Pine Savanna.

Ripley Esker

An esker is a landform built of sand and gravel deposited by a melt water stream that flowed beneath a glacier. The Ripley Esker is a classic esker; it stands 3 to 18 meters above the surrounding plain and is about 68 to 76 meters wide. Although the Ripley Esker is broken into several segments, it has an overall length of about 11 kilometers. The best views of the esker are in the spring and fall when the trees have no leaves and the prairie grasses are the dominant feature on the top of the esker.

Take Highway 371 north to county road 48 east, to county road 282 (165th Ave) north; approximately .8 miles. The esker is located 1.1 miles on right hand side. Watch for markers.

MacDougall Homestead

Natural areas in Minnesota can be divided into three general communities: prairie, deciduous forest, and coniferous forest. MacDougall Homestead, located at the crossroads of these general community types, contains examples of each. Within this 215-acre preserve are 18 vegetative types, including bluestem prairie, oak savanna, white pine woods, deciduous forests, alder-sedge-swamp, and birch-tamarack woods. In all, 145 species of plants, 30 species of butterflies, 58 species of birds, and 13 species of mammals have been observed at MacDougall Homestead.

Located in Morrison County, about 10 miles south of Little Falls and 2 miles west of Royalton. From Royalton, go west on Cty Rd 26 approximately 1.6 miles. Right onto Cty Rd 258 (gravel) approx 1.1 miles. The driveway is on left; Look for "Nature Conservancy" signs. The driveway leads to the old homestead where you can park in the yard area between the house and the barn.



**Little Falls Convention
& Visitors Bureau
606 First Street SE
Little Falls, MN 56345**

**1-800-325-5916
lfcvb@fallsnet.com
www.littlefallsmn.com**



Crane Meadows National Wildlife Refuge

Crane Meadows National Wildlife Refuge was established in 1992 to protect and restore wetlands and enhance waterfowl and other migratory bird habitat. Visitors are invited to experience the Refuge. Sandhill cranes and a host of other wildlife may be seen or heard as they use the sedge meadows, shallow lakes, wetlands, grasslands, oak woods, and other habitats on the Refuge.

The Platte River Hiking Trail offers a scenic 3.5-mile hike that leads the visitor along the banks of the Platte River to the edge of Rice Lake. The trail is comprised of 3 loops of varying distance with a one-tenth mile accessible trail and observation platform near the trailhead. The Platte River Hiking Trail is groomed for cross-country skiing during winter as conditions permit.

Directions: The trailhead for the Platte River Hiking Trail is located southeast of Little Falls, MN. From Highway 10, go 4.5 miles east on County Road 35, cross the Platte River Bridge and take the first road north to the trailhead parking. For more information, contact: Crane Meadows National Wildlife Refuge, 19502 Iris Road, Little Falls, MN 56345. Telephone: 320-632-1575. Email: R3RW_CMD@fws.gov.



Charles A. Weyerhaeuser Memorial Museum

The museum is located just south of the Lindbergh House at **2151 South Lindbergh Drive, Little Falls, MN.**

Hours: Tuesday through Saturday, 10:00 a.m. to 5:00 p.m. In the summer, the museum is also open on Sundays from 1:00 p.m. to 5:00 p.m.

Admission is free

Prairie grasses and flowers gently wave during the summer and autumn months at the Charles



A. Weyerhaeuser Memorial Museum. The museum site features several restored prairie areas and a



courtyard with a Victorian fountain and American Locust trees. Visitors can look down upon the Mississippi River from a gazebo. Gold finches, sparrows, and woodpeckers are a regular part of the courtyard landscape. Eagles fly over and rest in the museum's giant white pine. A roly-poly woodchuck and her babies

can sometimes be seen sunning themselves and playing during the spring and summer. The Weyerhaeuser Museum is connected to the Lindbergh House State Historic Site by a trail system. Across the street from the museum's drive is a trail leading into Lindbergh State Park. Together, the three sites offer eco-tourists plenty to see in a peaceful atmosphere. Inside the Weyerhaeuser Museum are exhibits and research resources related to Morrison County. For more information, call 320-632-4007 or access our website at www.morrisoncountyhistory.org.

Crow Wing State Park

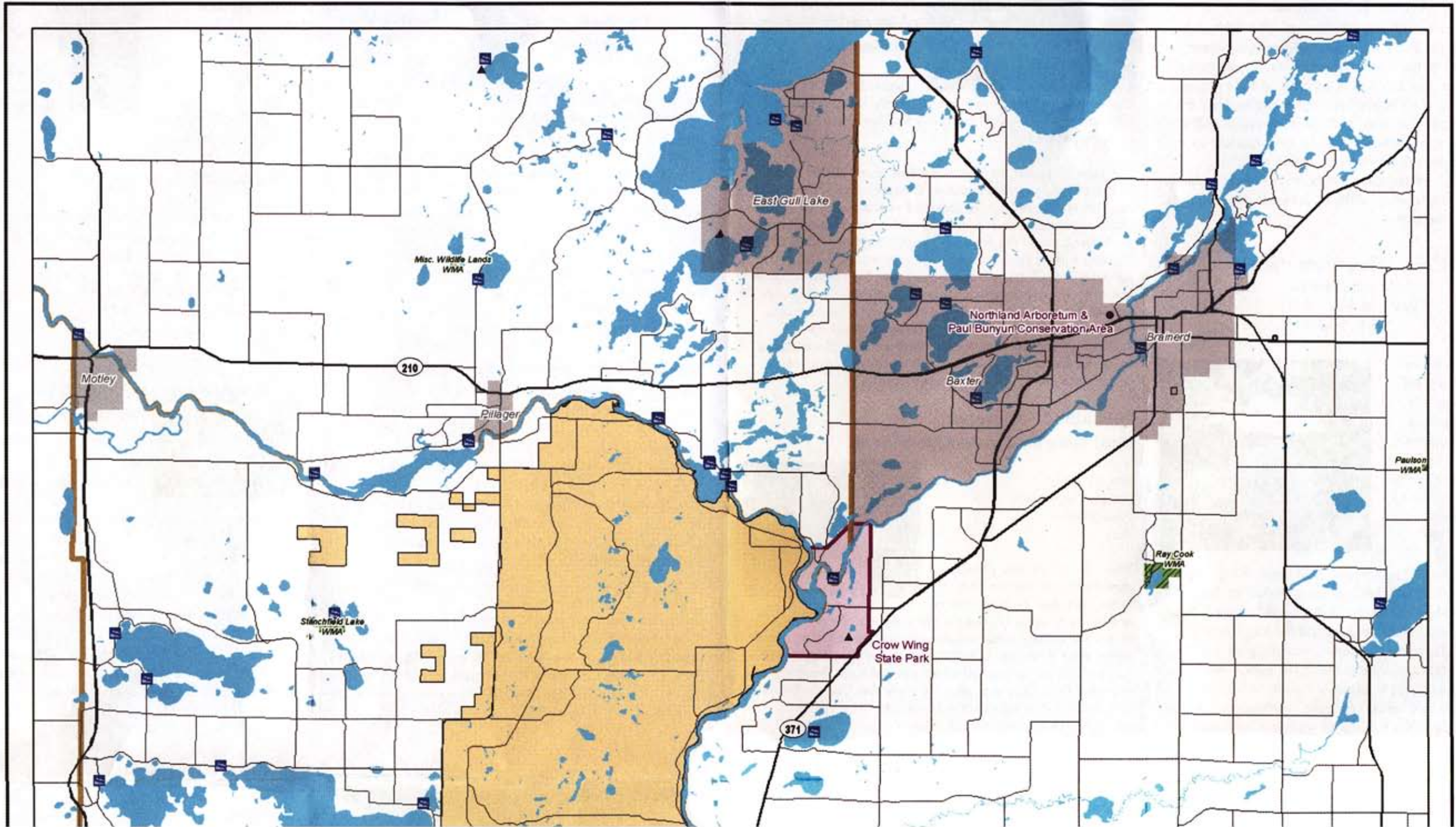
3124 State Park Rd.
Brainerd, MN 56401
218-825-3075

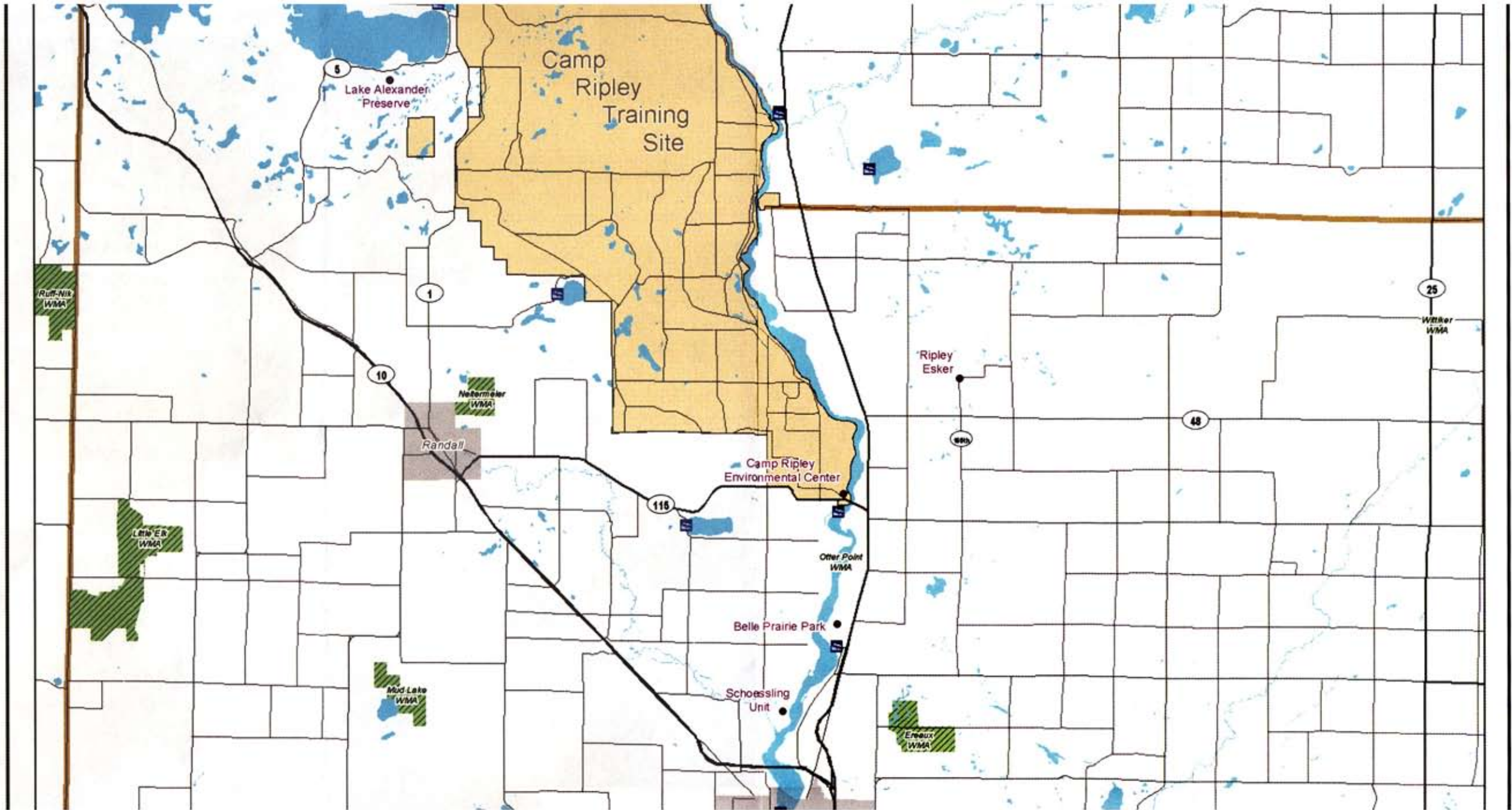
Located seven miles south of Brainerd off of US Highway 371. Recreation facilities include a campground, picnic shelter, hiking trails and a boat launch.

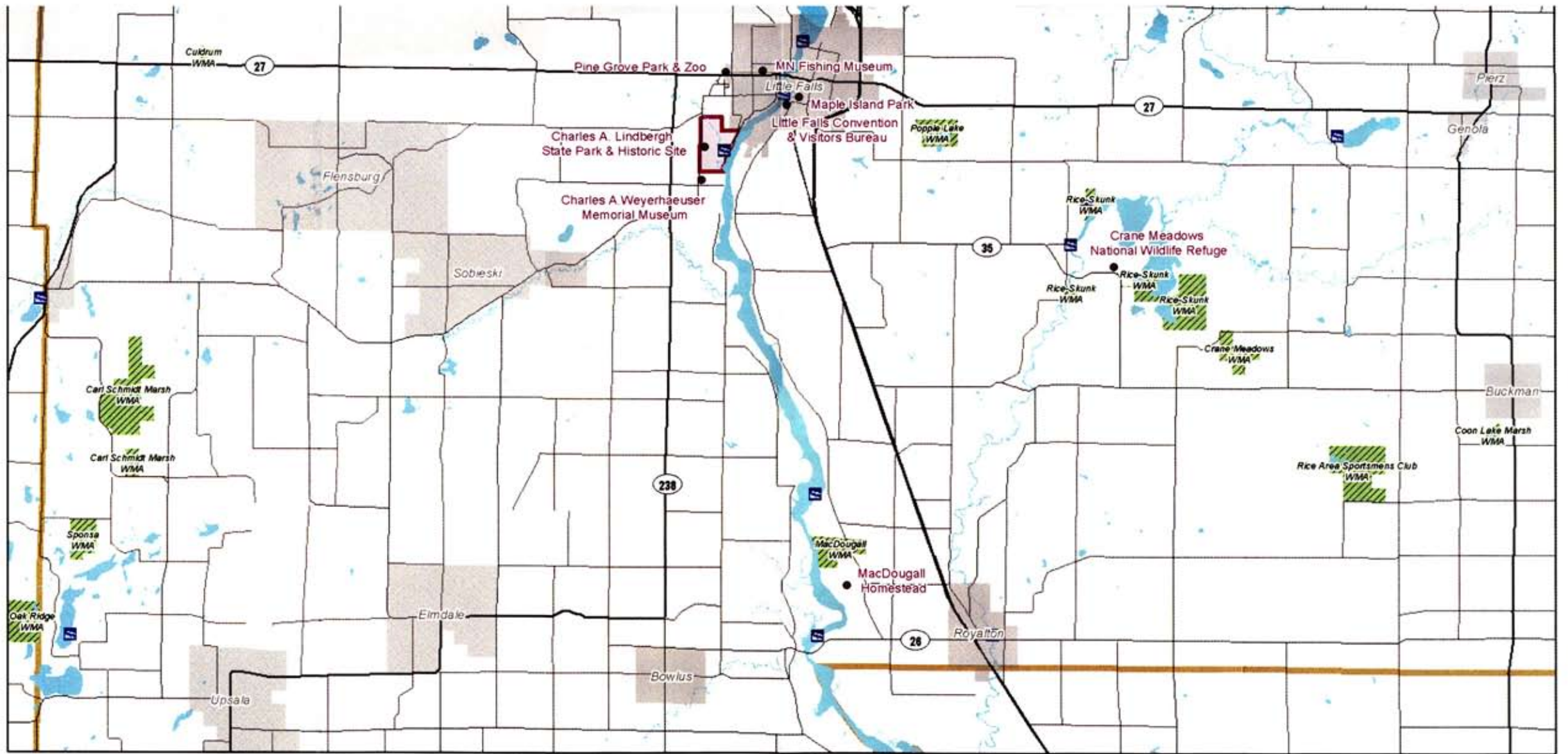
Its 1,700 acres encompass the confluence of the Crow Wing and Mississippi Rivers. The town of "Old Crow Wing" existed here in the mid-1800s'. Interpretive signs tell the history of the area, which include the Ojibwe and Dakota Indians, fur traders, missionaries, loggers and the Red River Oxcart Trail. Three major biomes: prairie, pine and hardwood forests are represented in the park. This gives nature lovers a chance to observe a wide variety of plants, animals and birds. For more information, call the park or visit the DNR website at www.dnr.state.mn.us.



Central Minnesota's Wild Side







- Public Water Access
- Wildlife Management Areas
- Site Location
- County Boundary
- Campground
- State Parks
- Water

